

Full automation
through
consolidation

Urine Sediment Analyzer

AUTION EYE

AI-4510

Fully Automated Urine Analyzer

AUTION MAX

AX-4060

ARKRAY Urinalysis System

Fewer Manual Steps

Automatic Dilution Function

Autodilution of highly concentrated samples reduces the need for further testing

High Quality Results

Automatic Cross-check

Compare chemistry test results with sediment analysis (Cross-check Function) improves reliability of results

Ease of Implementation

Compact Footprint

AUTION EYE AI-4510 can be connected to the AUTION MAX AX-4060 (Smart work cell)

Sensory Identification

Color and Individual Images

Color and individual images assist in particle identification

Unique Training Tool

Atlas Image Collection

12-category library

New, interesting images can be added to the collection

Reduces Need for Further Testing

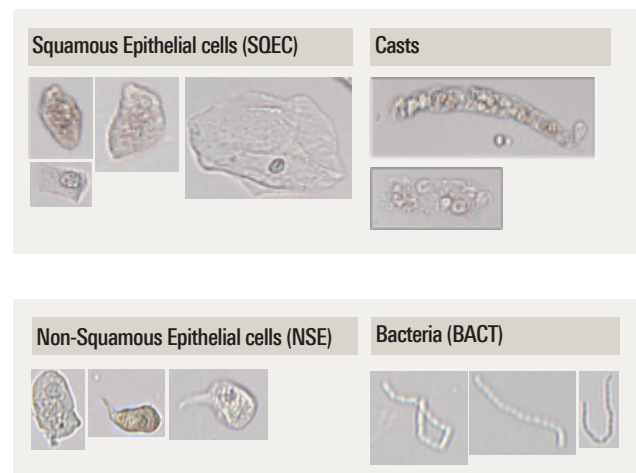
Gating Function

Urinalysis results of AX-4060 will determine if further sediment analysis is necessary

User can define testing rules

Atlas Image Collection

Examples of particle images



Smart transfer system allows for a compact footprint.

The AUTION EYE connects with the AUTION MAX AX-4060, and results in a very small footprint (41.9" x 25.6" x 23.6").



Urine Sediment Analyzer

AUTION EYE AI-4510

- Automatic Dilution Function
- Atlas Image Collection
- Microscopic Automatic image collection

Fully Automated Urine Analyzer

AUTION MAX AX-4060

- Compact Footprint
- Automatic Cross-check Function
- Gating Function

Specifications



Urine Sediment Analyzer

AION EYE AI-4510

The AION EYE AI-4510 is an analyzer that performs urine formed element analysis.

Sample Type	Urine
Measurement items	12 automated classification items: Red blood cells (RBC), White blood cells (WBC), White blood cell clumps (WBCC), Squamous epithelial cells (SQEC), Non-squamous epithelial cells (NSE), Hyaline casts (HYAL), Non-hyaline casts (NHC), Bacteria (BACT), Crystals (CRYS), Yeast (YST), Mucous (MUCS) and Sperm (SPRM)
Measurement principle	Flow cell digital imaging
Required sample volume	Minimum 2mL
Measurement time	45 seconds/test (Excluding cases in which large numbers of formed elements are present or in the case of control measurement)

*There is a limit to the number of saved images.

Sample loading capacity	One-way transportation (default): Maximum 50 samples Loop transportation: Maximum 100 samples
Display value	[/uL], [/HPF], [/LPF], [/WF] - Values can be converted to number of elements per field - Rank expression is possible
Memory capacity	Measurement results (Normal): 10,000 tests* Measurement results (QC): 1,000 tests
Communication	Ethernet, RS-232C
Reagents	Sheath solution, washing solution (for maintenance), control and calibrator
Dimensions	530(W) x 600(D) x 650(H) mm (20.9(W) x 23.6(D) x 25.6(H) inches) (including the sampler)
Weight	Approximately 125 lbs (57 kg)



Fully Automated Urine Analyzer

AION MAX AX-4060

Sample Type	Urine
Measurement items	Glu, Pro, Bil, Uro, Ket, pH, Nit, Bld, Leu, S.G., turbidity and color tone
Measurement principle	Test strip: Dual wavelength reflectance method (One-wavelength for Bld) Specific gravity: Reflection refractometry Color hue: Light-transmission measurement Turbidity: Light-scattering measurement method
Required sample volume	Normal, STAT measurement: Minimum 2 mL
Measurement time	225 samples/hour

Sample loading capacity	One-way transportation (default): Maximum 50 samples Loop transportation: Maximum 100 samples
Display	Large color liquid crystal display (800 x 480 dots)
Memory capacity	Normal, STAT, 2,500 tests
Communication	RS-232C compliant
Reagents	AION Sticks 9EB
Dimensions	530(W) x 530(D) x 550(H) mm (20.9(W) x 20.9(D) x 21.7(H) inches) (including the sampler)
Weight	Main body: Approximately 88 lbs. (40 kg) Sampler: Approximately 9 lbs (4 kg)